

April 8, 2011

Professional Development



**CONTINUING OUR WORK
WITH WRITER'S WORKSHOP**

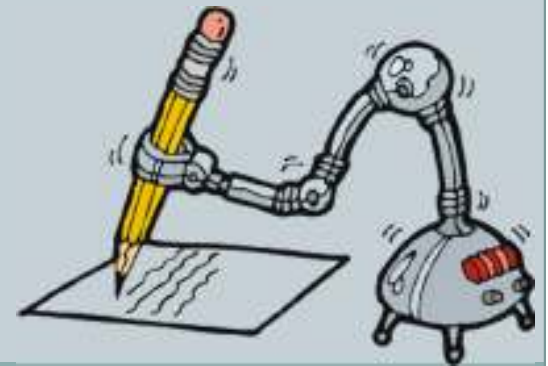
Our Afternoon



- Introducing Beverly Abram
- Preview of [LETRS](#) from Tara Paige
- [Budget](#) Overview
- Reorganization of [Curriculum](#)
- [Assessment](#) Work
- ~Break~
- Exposure to [Coaching Model](#)
- [PD](#) Thoughts & Ideas, Summer Institute, etc...
- [Celebration](#)
- Grade-level time:
 - Professional development planning
 - Continued work with curricular calendar
 - Investigation of online resources at www.readingandwritingproject.com

Budget Overview

- Carl Anderson - \$3,500
 - Plus expenses
- Summer Writing Institute - \$650/person (6)
 - Plus expenses
- Staff Developers - \$1,750-\$1,950/day (5)
 - Plus expenses
- Funds Covering Expenses
 - ARRA/Stimulus
 - Title IIA (Federal PD \$) from 2010 & 2011
 - General budget = \$2,600



Reorganization of Curricular Calendar



- Does your team feel the need to rearrange units of study? If so, how?
 - Think about timing
 - Think about coordination
- Does your team feel the need to create new units of study? If so, what?



Assessment Goals



- Reflecting on this year's work (Activity #1)
- Exposure to previous grade-level work (Activity #2)
- Practice making informed decisions about teaching points for student conferences
 - What skills to students exhibit?
 - What are some possible teaching points to focus on?
- Can some of these teaching points be plugged into your unit of study calendar for next year?



Coaching Model



- Why coaching?
 - Raising the level of our teaching in order to raise the level of learning.
- A hint of what you might see.
 - Modeling coaching types:
 - ✦ Modeling
 - ✦ Voicing over
 - ✦ Whispering in
 - ✦ Gesturing
- Debriefing



Tips & Reminders



- Mini lesson includes four components
 - Connection
 - Teaching Point, which is clearly stated
 - Active Engagement
 - Link
- Independence
 - Generating student work, thinking, and problem solving
- Paper Choice
- Charts



Summer Institute Topics



- Teachers College Writing Institute
 - June 27th – July 1st
- Mentor Texts
 - July 20, 2011
- LETRS Module #1
 - July 21, 2011
- Read Naturally
 - August 10, 2011



2011/2012 Professional Development Writer's Workshop



- August 4th – Carl Anderson
- September – TC Visit #1
- October 10th – Professional Development Day
- November/December – TC Visit #2
- January 16th – Professional Development Day
- Early February – TC Visit #3
- February 17th – Professional Development Day
- April – TC Visit #4
- April/May – Possible Grade-Level Planning Meetings
- May – TC Visit #5
- June 1/2 Professional Development Day (PM)

2011/2012 Professional Development – LETRS

Year#1 - Focusing on Reading Specialists & Special Education Teachers



- September 7th – Module #1
- October 10th – Module #2
- November 16th – Module #3
- December 14th 1/2 Day PM – Revisit Day
- February 17th – Module #4
- April 18th – Module #6
- May 16th 1/2 Day PM – Revisit Day



Celebration



- 10 minute written reflection about your year
- 5 minutes to share with your grade-level group
- 5 minutes to share out with the large group

